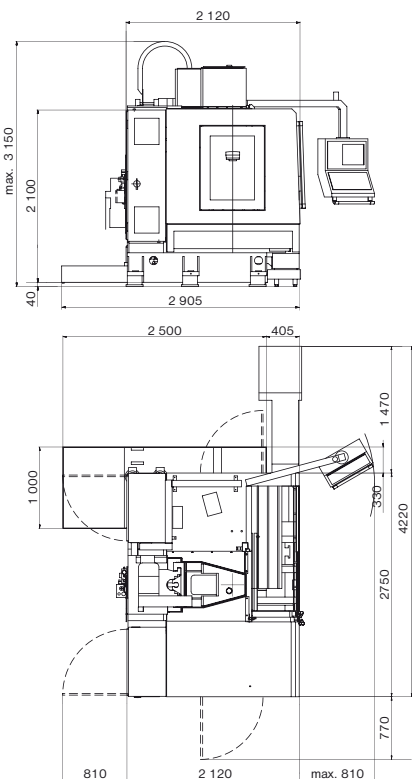




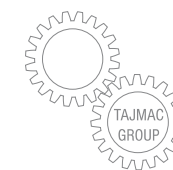
- High performance
- High strength and rigidity
- High dynamic and thermal stability
- Long-lasting high accuracy
- High reliability
- Guards making manipulation with workpieces easy
- Model flexibility
- Ecologically friendly

MCFV 1060

The **MCFV 1060** vertical machining centre covers the whole scale of technologies from the power up to the high-speed machining. The machine is formed by two steady castings which are the base and the column fastened on it. All movements of the machine are realized by means of the linear guideways with rolling elements. Their dimensions and locations allow the high load of the table, saddle and spindle head while the high accuracy of dimensions and quality of workpieces are kept even at the interrupted cut. It also ensures the machine long service life. The wide application of the machine invites to the usage of the plentiful accessories.



TECHNICAL DATA



Travels

X-axis (work table)	1 016 mm
Y-axis (cross saddle)	610 mm
Z-axis (spindle head)	760 mm
Distance of spindle nose to table	150 – 910 mm
Max. working feed	15 m/min
Rapid traverse	40 m/min
Acceleration	5 m/sec ²

Table

Working area	1 270 × 590 mm
Number of T-slots × width × span	5 × 18 mm × 125 mm
Max. load	1 350 kg

Spindle

	ISO 40 (HSK-A80)	ISO 50	ISO 40	ISO 50	ISO 40	HSK-A63
Clamping taper	ISO 40 (HSK-A80)	ISO 50	ISO 40	ISO 50	ISO 40	HSK-A63
Maximum speed	10 000 rpm	8 000 rpm	12 000 rpm	8 000 rpm	15 000 rpm	18 000 rpm
Continuous output / overload S6 – 40 %	20/28 kW	20/30 kW	17/25 kW	17/25 kW	25/31 kW	25/31 kW
Max. torque / overload S6 – 40 %	244/342 Nm	306/458 Nm	96/141 Nm	143/210 Nm	159/197 Nm	159/197 Nm
Transmission type	planetary gearbox*		belt drive		electrospindle*	

Tool magazine

Number of tool pots in magazine	30
Tool interchange time	3.5 sec
Tool maximum diameter:	
– fully occupied magazine	80 mm
– without adjacent tools	160 mm
Tool maximum length	300 mm
Tool maximum weight	6.5 kg
Total maximum weight	160 kg

Power supplies

Operational power input – acc. to motor	35 kVA
Nominal voltage of mains	3 × 400 V/50 Hz
Compressed air	0.6 – 0.8 MPa

Complementary data

Floor layout of machine without chip conveyor	2 750 × 2 120 mm
Machine maximum working height	3 150 mm
Machine weight	7 700 kg

Control system

HEIDENHAIN, SINUMERIK*, FANUC*

Descriptions of illustrations and specifications may not always correspond with the machine latest version.

Manufacturer
Tajmac-ZPS, a. s.
 Třída 3. května 1180
 764 87 Zlín, Malenovice
 CZECH REPUBLIC
 Tel.: +420 577 532 072
 Fax: +420 577 533 626
 www.tajmac-zps.cz
 e-mail: info@tajmac-zps.cz

Holding
Tajmac-MTM, s. p. a.
 Via Gran Sasso 15
 20092 Cinisello Balsamo (MI)
 ITALY
 Tel.: + 39 02 66017878
 Fax: + 39 02 66011457
 www.tajmac-mtm.it
 e-mail: tajmac@tajmac-mtm.it

TIGRIS, s.r.o., Zlín 3/2013

STANDARD VERSION

- Digital drives
- Linear optoelectric measuring rulers
- Tool magazine with tool change arm
- Central lubrication system
- Tool holder automatic air blasting
- Coolant unit with tool cooling system
- Washing off of telescopic covers
- Electronic compensation

OPTIONAL EQUIPMENT*

- Tool cooling with coolant through spindle axis
- Tool cooling with air through spindle axis
- Coolant unit with filtration unit for cooling through spindle axis
- SK 50 – tool magazine with capacity of 24 tools
- Clamping taper – CAT 40, BT 40, CAT 50, BT 50, ISO 50, HSK-A63, HSK-A80, HSK-A100
- Rotary table, 4th and 5th controlled axis
- Workpiece dimension checking probe
- Tool dimension checking probe
- Manual pallet changer, pallet size 760 × 460 mm
- Automatic pallet changer, pallet size 1250 × 590 mm
- Chip conveyor
- Chip buckets
- Work zone washing off – upper
- Tool cooling with oil mist
- Centrifugal separator of oil mist and emulsion aerosol from work zone
- Oil collector from coolant surface
- 2 tool magazines